

# FOR SALE – Commercial Zoning

1,120+/- Sq. Ft. with .46+/- Acres



1373 6<sup>th</sup> Ave  
Auburn, Georgia 30011

David Evans

[david@simpsoncompany.com](mailto:david@simpsoncompany.com)



3449 Lawrenceville-Suwanee Rd #E

Suwanee, GA 30024

Main: 770.904.7127

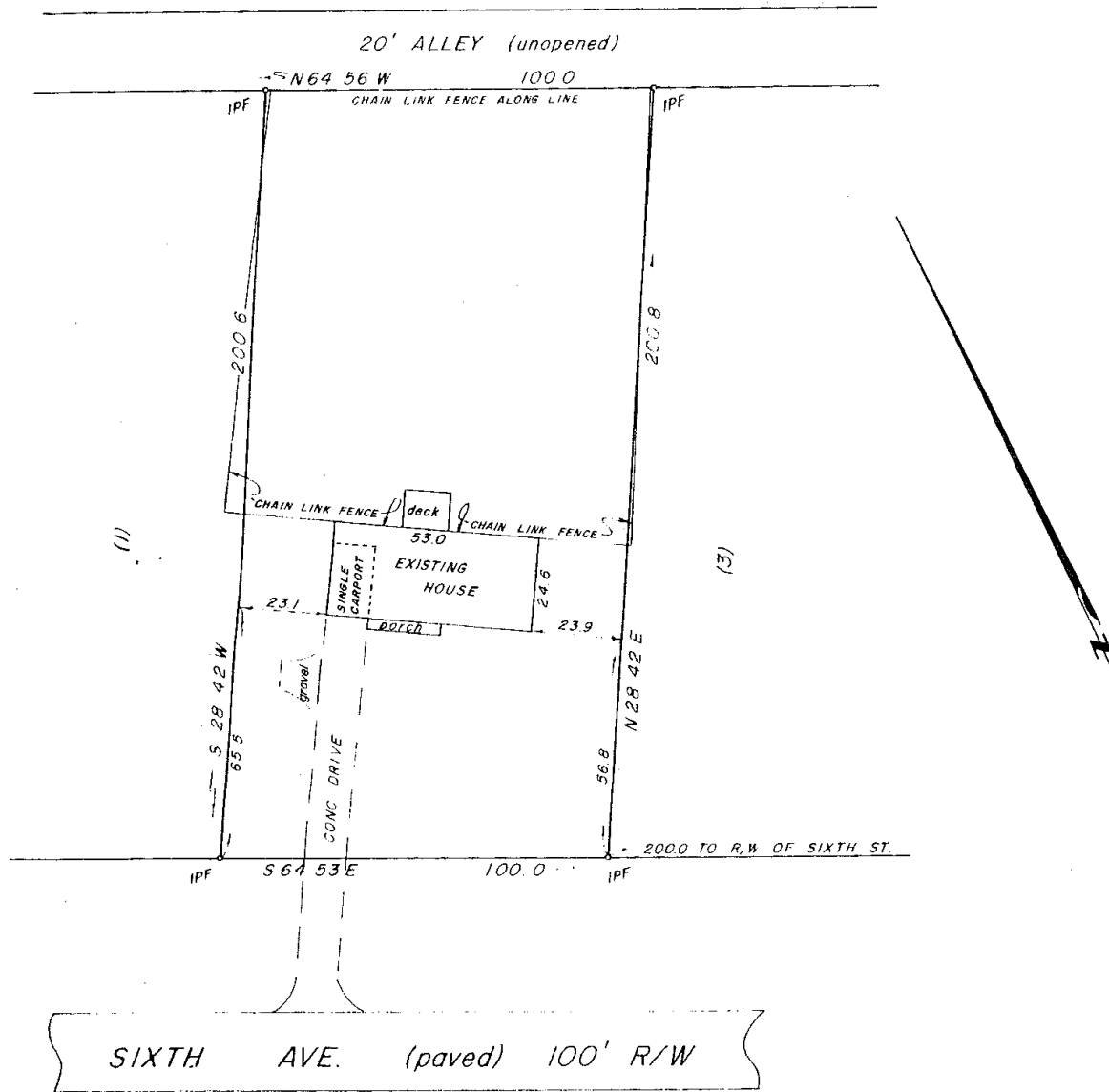
Fax: 770.904.7069

[www.simpsoncompany.com](http://www.simpsoncompany.com)



Individual  
Member

- 1,120+/- Sq. Ft. House/Office Available
- Part of new Business Overlay District
- Can be used as Residential or Commercial Use
- All Utilities (Sewer which will be added soon)
- Asking Price: ~~\$98,000~~ **\$80,000**



*M. Stonecypher*

1577

BEING LOT 2 OF A SURVEY FOR PHILIP GRESHAM, DATED 4-24-74,  
 BY GRESHAM & MARMELSTEIN (PLAT BOOK 10 - PAGE 10)  
 DWELLING NOT LOCATED IN A FLOOD HAZARD AREA

CLOSING PLAT FOR				STATE OF GEORGIA
MARK STONECYPHER, TERESA G. DAVIS & RICKY J. DAVIS				
CITY	GMD	COUNTY	SCALE	DATE
AUBURN	1740	BARROW	1" = 30'	1/10/88