



**Commercial /
Residential Site**
McEver Road
Tract A
Flowery Branch, GA

Property Information:

Location:

Located at McEver Rd. & Jim Crow Rd. Near Flowery Branch Elementary School, Oakwood South Industrial Park in Flowery Branch.

Acres:

15.0± Acres

Zoned:

NS (Neighborhood Shopping)

Highest & Best Use:

Commercial-Industrial-Residential

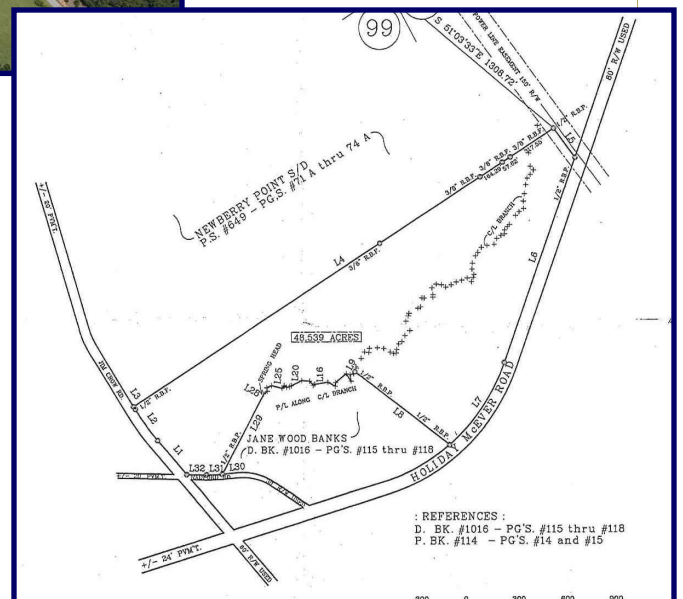
Traffic Count:

McEver Rd: 9,510

Asking Price:

\$52,000/Acre

(Note: Prices subject to change without notice)



Marketed By

Frank N. Simpson, CCIM SIOR
President

770.532.9911

frank@simpsoncompany.com

www.SimpsonCompany.com